



**Evergreen Secondary School**  
*Evergreen in Learning, Exceptional in Character*

Briefing for Sec 2 Students & Parents

# Stand Tall with Dynamism

25 April 2025, 1700 – 1830



# Welcome, Parents / Guardians!

## ***Purpose:***

1. Inform about upcoming exams and important timelines related to **subject combination exercises**.
2. Ensure **clarity and understanding** regarding academic expectations and subject combination exercise processes.
3. Offer **guidance and resources** such as the Subject Combination Allocation Exercise Info Booklet to assist students in making thoughtful and appropriate subject choices for Sec 3 and to better support parents to journey together with their child/ward.

# Programme

1. Important Information for Secondary 2
2. Principal's Address
3. Subject Combination Exercise
4. Subject-Based Banding Matters
5. Admission to post-secondary education institutes
6. Education and Career Guidance
7. Sources of ECG Support
8. School-Home Partnership
9. Q&A



*Evergreen in Learning,  
Exceptional in Character*

# Important Information for Secondary 2





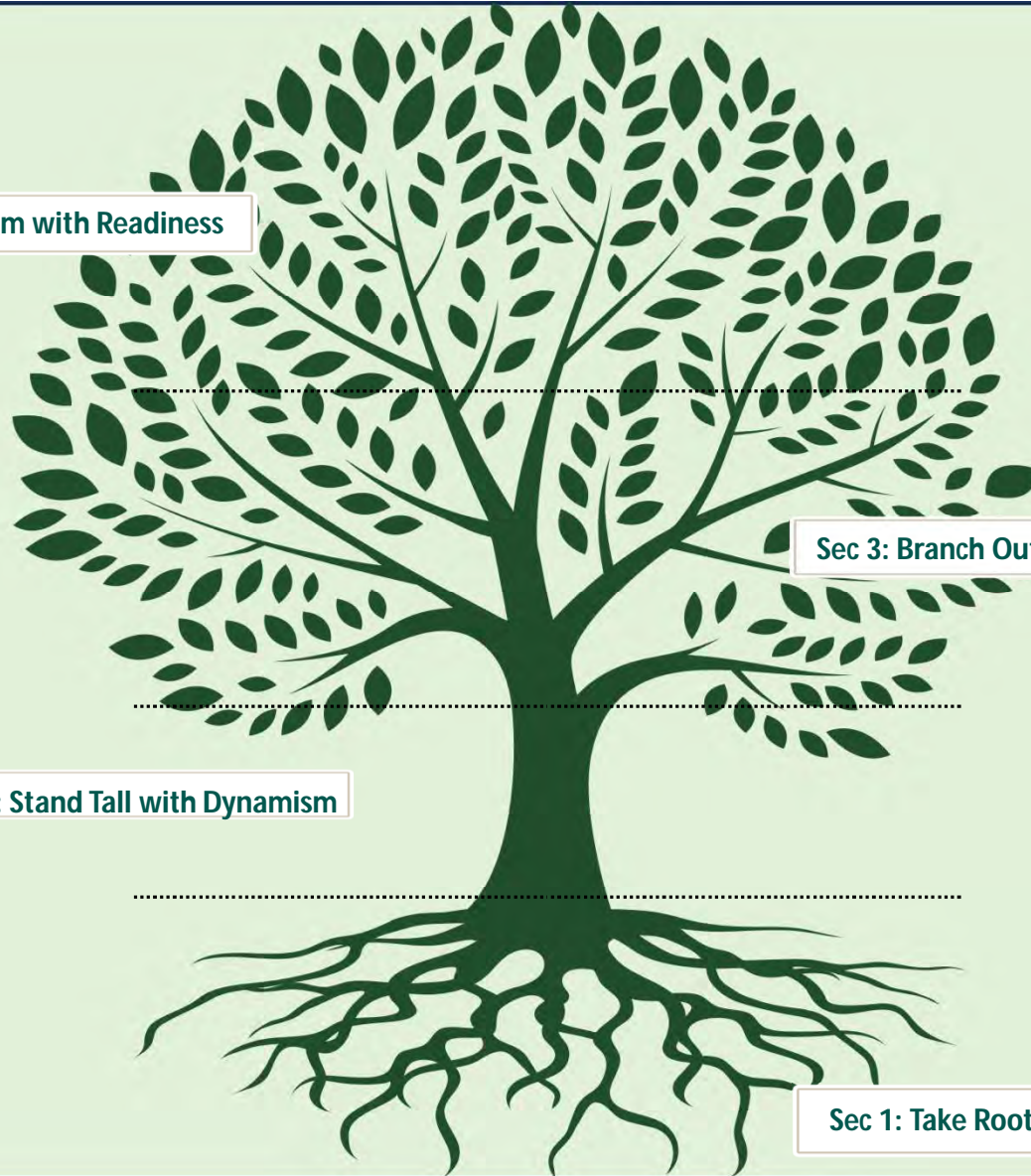
# The Evergreen Tree

Sec 4/5: Blossom with Readiness

Sec 3: Branch Out with Resilience

Sec 2: Stand Tall with Dynamism

Sec 1: Take Root with Confidence



# What is important for the Sec 2s this year?

- **Balance their studies with CCA and other activities** for holistic development and well-being
- **Consider the possible education pathways** they want to take after EVG
- **Choose their Sec 3 subject combination** accordingly
  - *In discussion with parents, teachers and our Education and Career Guidance Counsellor*

# Progression Criteria

All students generally progress to the next year of learning, guided by a common academic requirement:

(1) Pass English Language and 2 subjects

OR

(2) Pass at least half the total number of examinable subjects offered (minimum 3 subjects)

Note :

- 'Examinable subjects' do not include CCE, PE and lower secondary Music
- 'Pass' refers to an overall mark of at least 50% for the subject, regardless of subject level.

# Sec 2 Assessment Structure

Term	1	2	3	4
Assessment	Weighted Assessment (WA) 1	Weighted Assessment (WA) 2	Weighted Assessment (WA) 3	End-of-Year Exams
Weighting	15 %	15 %	15 %	55 %





*Evergreen in Learning,  
Exceptional in Character*

# Principal's Address

Ms Bian Yu Wei



# BACKGROUND

MOE COS 2025

## Maximising Our Students' Potential

Revised Junior College admission criteria encourage students to develop themselves holistically



Nurturing Students Holistically and Fulfilling their Potential

## Revised Junior College Admission Criteria

From the 2028 Joint Admissions Exercise (JAE), the number of subjects required for JC admission will be reduced from 6 to 5.

Students will be able to recalibrate their curriculum load by offering one fewer subject and use the freed-up time to strengthen their development of 21st Century Competencies and pursue other interests.

Now

$$\underline{\text{L1}} \boxed{\text{R5}} \leq 20 \rightarrow \underline{\text{L1}} \boxed{\text{R4}} \leq 16$$

### Cap on bonus points

The cap on bonus points will be lowered from a maximum of 4 to 3 points.

From 2028 JAE

$$\underline{\text{L1}} \boxed{\text{R5}} \rightarrow \underline{\text{L1}} \boxed{\text{R4}}$$

The qualifying threshold for JC eligibility will be revised from  $\text{L1R5} \leq 20$  to  $\text{L1R4} \leq 16$

Component Subjects		Now L1R5	2028 JAE L1R4
L1	English or Higher Mother Tongue	✓	✓
R1	Any 1 best-scoring subject from Humanities	✓	✓
R2	Any 1 best-scoring subject from Mathematics or Science	✓	✓
R3	Any 1 best-scoring subject from Humanities, Mathematics or Science	✓	✓
R4	Any 1 best-scoring subject	✓	✓
R5	Any 1 best-scoring subject	✓	



Students taking at least	POST-SEC PATHWAYS					
	ITE Year 1 Entry	ITE Year 2 Entry	Polytechnic Foundation Programme (PFP)	Polytechnic Year 1	Millennia Institute	Junior College
6 <b>G3</b> subjects	✓	✓	NEW ✓	✓	✓	✓
5 <b>G3</b> subjects	✓	✓	NEW ✓	✓	✓	NEW ✓
4 <b>G3</b> + 1 <b>G2</b> subjects subject	✓	✓	NEW ✓	NEW ✓		
5 <b>G2</b> subjects	✓	✓	✓			
4 <b>G1</b> subjects	✓	NEW* ✓				

\*For students who meet ITE's Year 1 academic requirements

# Why Shift to L1R4?

Develop emerging 21<sup>st</sup>  
Century Competencies  
(e21CC)

Pursue interests and  
strengths, aspirations

**The Future-  
Ready EVGian**

Well-Being

Develop Character and  
Values



# Debunking Myths

- ☒ You need to do 8 subjects to do well in or be ready for JC
  - *6 or 7 G3 subjects provide students access to a good range of JC courses*
- ☒ JC admission is now “easier” / “harder”
- ☒ You can now spend the extra time perfecting your grades
- ☒ You need Triple Sciences to get into Medicine
  - *Strongly recommended to do A. Math and Pure Science in order to pursue H2 Math and H2 Science in JC (please refer to individual JC course requirements for details)*
  - *Student who wish to pursue Humanities at JC could also consider doing Pure Humanities*

# The Evergreen Approach to Preparing your Child

#ExceptionallyEvergreen

## Developing the eXceptional-Factor: The Future-Ready EVGian

- Develop 21CC, leadership, character and values
- Pursue strengths and interests
- Prepare for Post-Secondary pathways
  - E.g. Direct School Admissions, Poly/ITE Early Admissions Exercise, Arts Institutions
  - Require portfolio, interviews etc

### PORT FOLIO



Future Ready EVGian  
2025-2028

The Evergreen Approach to Preparing your Child  
#ExceptionallyEvergreen

# Base Subjects + X-Factor

[Default 6/7 Subjects + X-factor]

# Developing the eXceptional-Factor



## Academic Stretch Programmes

(E.g. Olympiads, Competitions, Internships etc)



## Student Development Stretch Programmes

(e.g. CCA, VIA, Leadership, LLP, Applied Learning Modules etc)



## Post-Secondary Preparation

(e.g. DSA-JC, JC Scholarships, Poly-EAE, ITE-EAE, Arts Institutions)





*Evergreen in Learning,  
Exceptional in Character*

# Subject Combination Matters





# Importance of the Subject Combination Exercise

Choosing a suitable subject combination will:

- Enable your child to feel **motivated and engaged** to do well in their academic studies
- Provide the **opportunity** for your child to develop their strengths that can contribute to their growth **holistically**
- Prepare your child to enrol in the school/course of their choice in their **post-secondary pursuits**

# Timeline

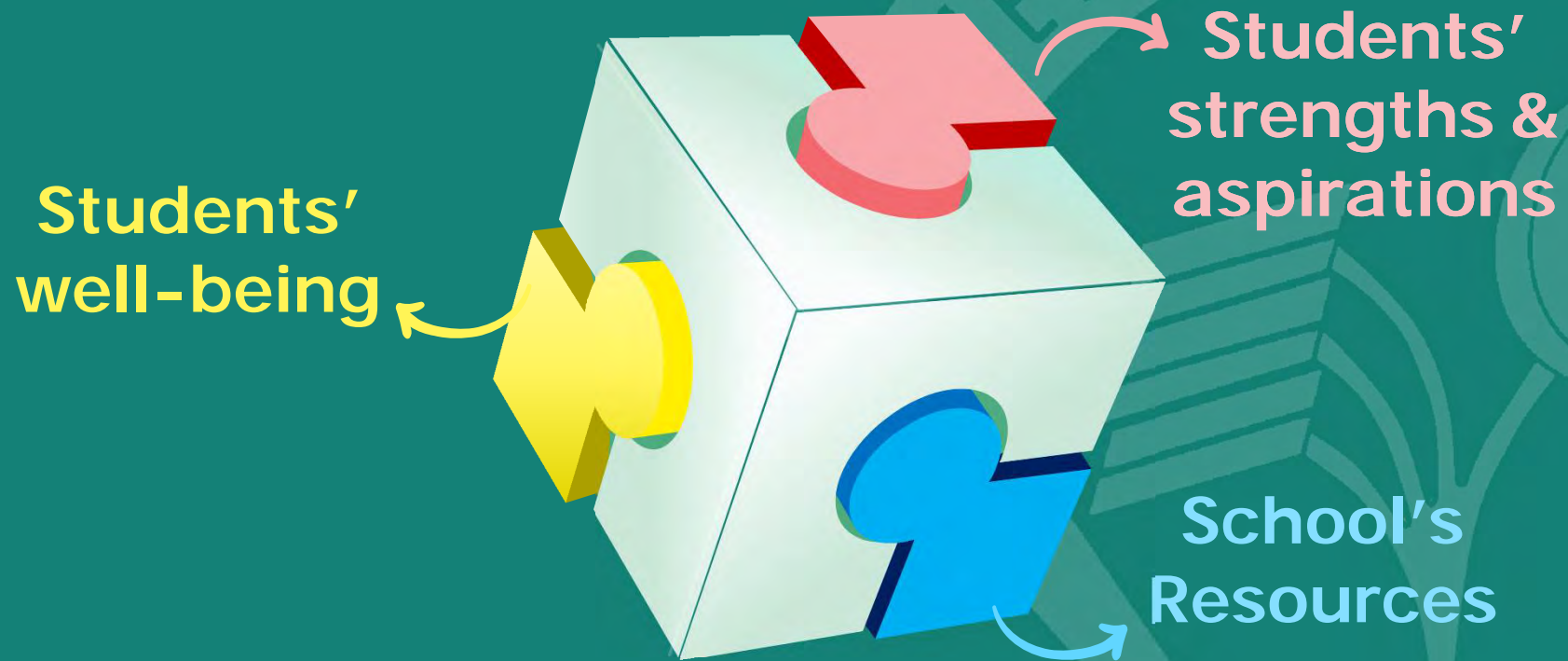
Briefing for  
Parents on  
Post-Sec  
Pathways &  
Subject  
Combinations  
[April]

Subject  
Combination  
Engagement  
Session  
[May]

Subject  
Combination  
Preference  
Survey  
[June – July]

Subject  
Combination  
Briefing and  
Allocation  
Exercise  
[October –  
November]

# Considerations for Subject Combinations



- In which subjects do you find yourself grasping concepts quickly without needing extensive additional support?
- Which subject areas do you find yourself demonstrating the most resilience in when working on challenging academic tasks?

- How do you typically manage your current study workload and time?
- How much time do you need for rest, family, other commitments and social activities to maintain good mental health?

## Strengths

## Interests

### Curriculum Load

1. How many subjects should I take?
2. What subjects should I take, and at which subject levels should I take them?

## Well-being

## Aspirations

- Which subjects are you interested in?
- Outside of academics, what personal interests do/ would you like to pursue?

- Which post-secondary pathway are you aspiring to?
- Which course in a particular pathway do you hope to pursue?

# Possible subjects at Sec 3

HUMANITIES	Examinable Subjects	G3	G2	G1
	English Language	✓	✓	✓
	Mother Tongue (Chinese / Malay)	✓	✓	✓
	Higher Mother Tongue	✓		
	Mathematics	✓	✓	✓
	Additional Mathematics	✓		
	Social Studies + Geography	✓	✓	
	Social Studies + History	✓	✓	
	Social Studies + Literature in English <sup>New</sup>	✓	✓	
	Literature in English	✓		
	History <sup>New</sup>	✓		

SCIENCES	Examinable Subjects	G3	G2	G1
	Science			✓
	Science (Physics/Chemistry)	✓	✓	
	Science (Physics/Biology)	✓		
	Biology	✓		
	Chemistry	✓		
	Physics	✓		
ELECTIVES	Art	✓	✓	✓
	Design & Technology	✓	✓	✓
	Nutrition & Food Science	✓	✓	✓
	Principles of Accounts	✓	✓	
	Computing	✓		✓
	Elements of Business Skills			✓



# Subject Selection Criteria

Subject	Selection Criteria
Elective G3 Geography	Overall pass in G3 Geography
Elective G2 Geography	Overall pass in G2 Geography
Elective G3 History	Overall pass in G3 History
Elective G2 History	Overall pass in G2 History
Elective G3 Literature in English <sup>New</sup>	Overall pass in G3 Literature
Elective G2 Literature in English <sup>New</sup>	Overall pass in G2 Literature
G3 History <sup>New</sup>	Overall pass in G3 History
G3 Literature in English	Overall pass in both G3 English and G3 Literature

# Subject Selection Criteria

Subject	Selection Criteria
G3 Biology	Overall pass in G3 English and ≥ 65% Overall in G3 Science
G3 Chemistry	Overall pass in G3 English and ≥ 65% Overall in G3 Science
G3 Physics	Overall pass in G3 English and ≥ 65% Overall in G3 Science
G3 Science (Physics/Biology)	Nil
G3 Science (Physics/Chemistry)	Nil
G2 Science (Physics/Chemistry)	Nil
G1 Science	Nil

# Subject Selection Criteria

Subject	Selection Criteria
G3 Art	≥ 60% Overall in Art
G2 Art	≥ 55% Overall in Art
G1 Art	Nil
G3 Design & Technology	≥ 60% Overall in Design & Technology
G2 Design & Technology	≥ 55% Overall in Design & Technology
G1 Design & Technology	Nil
G3 Nutrition and Food Science	≥ 60% Overall in FCE
G2 Nutrition and Food Science	≥ 55% Overall in FCE
G1 Nutrition and Food Science	Nil

# Subject Selection Criteria

Subject	Selection Criteria
G1 Elements of Business Skills	Overall Pass in English
G3 Principles of Accounts	Overall Pass in G3 Maths or $\geq 65\%$ Overall in G2 Maths <b>and</b> Overall Pass in G3 English or $\geq 65\%$ Overall in G2 English
G2 Principles of Accounts	Overall Pass in both G2 English and G2 Maths
G3 Additional Mathematics	Overall Pass in G3 Maths
G3 Computing (offered externally)	$\geq 60\%$ Overall in Sec 1 G3 Maths and Overall Pass in Sec 2 G3 Maths (Selection by MOE)
G1 Computing	Nil



*Evergreen in Learning,  
Exceptional in Character*

# Possible Subject Combinations



Students taking at least	POST-SEC PATHWAYS					
	ITE Year 1 Entry	ITE Year 2 Entry	Polytechnic Foundation Programme (PFP)	Polytechnic Year 1	Millennia Institute	Junior College
6 <b>G3</b> subjects	✓	✓	NEW ✓	✓	✓	✓
5 <b>G3</b> subjects	✓	✓	NEW ✓	✓	✓	NEW ✓
4 <b>G3</b> + 1 <b>G2</b> subjects subject	✓	✓	NEW ✓	NEW ✓		
5 <b>G2</b> subjects	✓	✓	✓			
4 <b>G1</b> subjects	✓	NEW* ✓				

\*For students who meet ITE's Year 1 academic requirements

# Post-Secondary Option: PFP/ITE

## Compulsory Subjects (G1/G2)

1. English Language
2. Mother Tongue
3. Mathematics
4. Science
5. **Computing (G1)** (*previously known as Computer Applications*)



## Possible Combinations

Choose 1 elective

- 6. Design & Technology (G1/G2/G3)
- 6. Elements of Business Skills (G1)
- 6. Art (G1/G2/G3)
- 6. POA (G2/G3)
- 6. NFS (G1/G2/G3)

Note:

Eligible students may take selected subjects at MDL if meet criteria:  
≥ 75% in specific subject

	POST-SEC PATHWAYS					
	ITE Year 1 Entry	ITE Year 2 Entry	Polytechnic Foundation Programme (PFP)	Polytechnic Year 1	Millennia Institute	Junior College
Students taking at least <b>5 G2</b> subjects	✓	✓	✓			
<b>4 G1</b> subjects	✓	NEW* ✓				

\*For students who meet ITE's Year 1 academic requirements

# Post-Secondary Option: Poly Year1/PFP

## Compulsory Subjects (G2/G3)

1. English Language
2. Mother Tongue
3. Mathematics
4. Humanities (SS/Geography or SS/History or SS/Literature)
5. Science (Physics/Chemistry)



## Possible Combinations

Choose 1 elective

- 6. Art (G1/G2/G3)
- 6. Design & Technology (G1/G2/G3)
- 6. Literature (G3)
- 6. History (G3)
- 6. Nutrition & Food Science (G1/G2/G3)
- 6. Principles of Accounts (G2/G3)

Note:

Eligible students may take selected subjects at MDL if meet criteria:  
 ≥ 75% in specific subject

Students taking at least	POST-SEC PATHWAYS					
	ITE Year 1 Entry	ITE Year 2 Entry	Polytechnic Foundation Programme (PFP)	Polytechnic Year 1	Millennia Institute	Junior College
4 <b>G3</b> + 1 <b>G2</b> subjects	✓	✓	NEW ✓	NEW ✓		
5 <b>G2</b> subjects	✓	✓	✓			

## Post-Secondary Option: All Pathways Open

For students who are generally more interested in the Arts and Humanities (students taking this combi will require significant bridging if they choose to do H2 Science and H2 Math in JC)

### Compulsory Subjects (G3)

1. English Language
2. Mother Tongue
3. Mathematics
4. Humanities (SS/Geography or SS/History or SS/Literature)
5. Science (Physics/Chemistry) or Science (Physics/Biology)

### 6<sup>th</sup> Subject

Choose 1 elective

A Maths (G3)  
POA (G2/G3)  
Literature (G3)  
History (G3)  
Art (G1/G2/G3)  
D&T (G1/G2/G3)  
NFS (G1/G2/G3)

### 7<sup>th</sup> Subject

Choose 1 **other** elective

A Maths (G3)  
POA (G2/G3)  
Literature (G3)  
History (G3)

Students with certain strengths, interests and aspirations may consider taking an 8<sup>th</sup> subject.

Students taking at least	POST-SEC PATHWAYS					
	ITE Year 1 Entry	ITE Year 2 Entry	Polytechnic Foundation Programme (PFP)	Polytechnic Year 1	Millennia Institute	Junior College
6 G3 subjects	✓	✓	NEW ✓	✓	✓	✓
5 G3 subjects	✓	✓	NEW ✓	✓	✓	NEW ✓



## Post-Secondary Option: All Pathways Open

For students who are generally more interested in the Sciences

**Compulsory Subjects  
(G3)**



**7<sup>th</sup> Subject**

1. English Language
2. Mother Tongue
3. Mathematics
4. Additional Mathematics
5. Humanities (SS/Geography or SS/History or SS/Literature)
6. Chemistry (G3)

Choose 1 Science

Biology (G3)

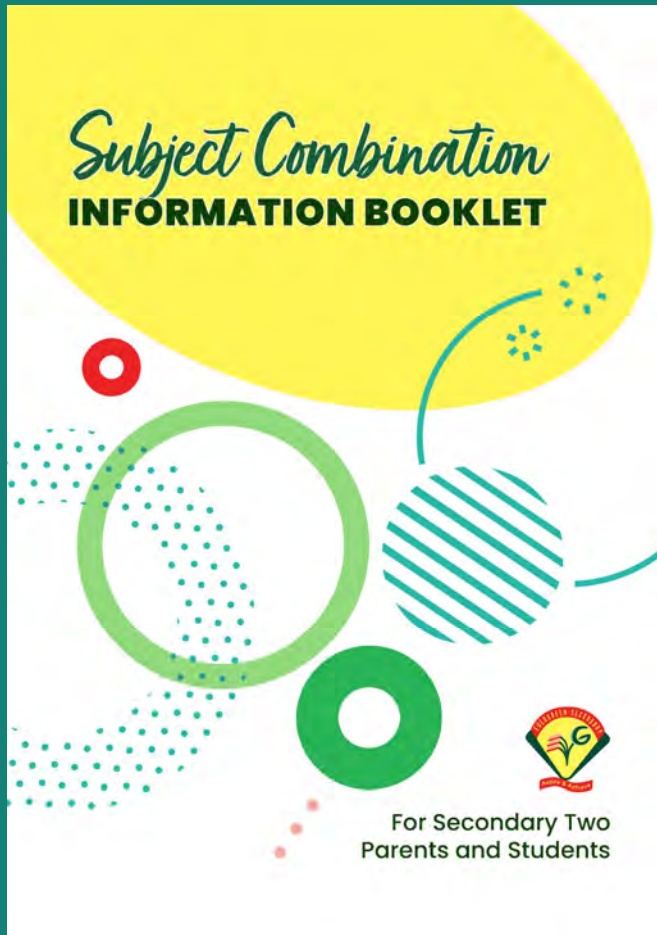
Physics (G3)

Students with certain strengths, interests and aspirations may consider taking an 8<sup>th</sup> subject.

Students taking at least	POST-SEC PATHWAYS					
	ITE Year 1 Entry	ITE Year 2 Entry	Polytechnic Foundation Programme (PFP)	Polytechnic Year 1	Millennia Institute	Junior College
6 G3 subjects	✓	✓	NEW ✓	✓	✓	✓
5 G3 subjects	✓	✓	NEW ✓	✓	✓	NEW ✓



# SUBJECT INFORMATION BOOKLET



# Subject Preference Survey

## Purpose

- To **plan** for the subject combinations that may be offered in 2026, based on student strengths and aspirations, well-being, and school resources
  - This is **NOT** the final selection of each student's Sec 3 subject choices: that will be done at the end of year

## How

- Link will be sent via Parents Gateway for students to access MOE's *All Ears* platform.

## When

- 30 May 2025 to 4 July 2025



*Evergreen in Learning,  
Exceptional in Character*

# Subject-Based Banding Matters



# Rationale of Full SBB

Full SBB aims for students to:



Have **greater ownership of their learning** according to their strengths, interests and learning needs



Develop a **growth mindset and an intrinsic motivation** to learn for life



Have **more opportunities to interact with friends** of different backgrounds, strengths and interests



Have **more options for post-secondary pathways**, while ensuring they have strong fundamentals and can thrive in their chosen pathway



# What's next?

Secondary 1 & 2

End of Secondary 2

Secondary 3 & 4

## Deciding on Upper Secondary subject combinations

All students will offer between 5 and 8 examinable subjects for Upper Secondary.

## Upper Secondary

Students will continue to have flexibility to offer subjects at different subject levels, including elective subjects (e.g. Principles of Accounts, Art, Design & Technology).



# Offering Subjects at a More Demanding Level

- Eligibility criteria for taking subjects at a more demanding level at upper secondary:

Subject level at lower secondary	Subject level for upper secondary									
Offered <b>English Language, Mother Tongue Languages, Mathematics, Science and/or Humanities subjects</b> at a more demanding level	Should be encouraged to <u>continue</u> offering the subject(s) at the same subject level									
<u>Did not offer</u> <b>English Language, Mother Tongue Languages, Mathematics and/or Science</b> at a more demanding level	Could <u>start to offer</u> the subject(s) at a more demanding level from Sec 3 if they meet the following criteria:									
	<table><tr><th>Current subject level</th><th>School-based results</th><th>Option to offer subject at</th></tr><tr><td>G2</td><td>≥75% in the specific subject</td><td>G3 starting from next semester</td></tr><tr><td>G1</td><td>≥75% in the specific subject</td><td>G2 starting from next semester</td></tr></table>	Current subject level	School-based results	Option to offer subject at	G2	≥75% in the specific subject	G3 starting from next semester	G1	≥75% in the specific subject	G2 starting from next semester
	Current subject level	School-based results	Option to offer subject at							
	G2	≥75% in the specific subject	G3 starting from next semester							
G1	≥75% in the specific subject	G2 starting from next semester								

# Offering Subjects at a More Demanding Level

Subject level at lower secondary	Subject level for upper secondary		
Did not offer <b>Humanities subject(s)</b> at a more demanding level	Could <u>start to offer</u> the subject(s) at a more demanding level from Sec 3 if they are deemed able to cope with the subject based on the following criteria:		
	Current subject level	School-based results	Option to offer subject at
	G2	≥ 75% overall in G2 Geography, History or Literature in English at Sec 2	G3
	G1	≥ 75% overall in G1 English Language (or ≥50% overall in G2 English Language) & A Pass with Distinction grade for both G1 Humanities (Social Studies component) Performance Tasks in Semesters 1 and 2	G2

# What's next?

## End of Secondary 4/5

### **Singapore-Cambridge Secondary Education Certificate (SEC) Examination**

From 2027, students will sit for the new SEC examinations, with different papers for each subject level.

## Post-Secondary

### **Admission to post-secondary education institutes**

Admission criteria have been progressively updated to recognise students taking different combinations of subjects and subject levels.

- E.g., Polytechnic Foundation Programme (PFP) has been expanded to allow access to students offering G3 subjects, or a mix of G2 and G3 subjects.



*Evergreen in Learning,  
Exceptional in Character*

# Admission to post- secondary education institutes




# Overview of Post-Secondary Pathways

**From 2028,  
more post-secondary options  
will be available.**

Students taking at least	POST-SEC PATHWAYS					
	ITE Year 1 Entry	ITE Year 2 Entry	Polytechnic Foundation Programme (PFP)	Polytechnic Year 1	Millennia Institute	Junior College
6 G3 subjects	✓	✓	NEW ✓	✓	✓	✓
5 G3 subjects	✓	✓	NEW ✓	✓	✓	NEW ✓
4 G3 + 1 G2 subjects subject	✓	✓	NEW ✓	NEW ✓		
5 G2 subjects	✓	✓	✓			
4 G1 subjects	✓	NEW* ✓				

\*For students who meet ITE's Year 1 academic requirements



Information presented is accurate as of March 2025. © Ministry of Education, Singapore. All Rights Reserved.



# From 2028 JAE, Admissions to JC/MI

**NEW!**

**L1R5** → **L1R4**

The qualifying threshold for JC eligibility will be revised from

**L1R5 ≤ 20 to L1R4 ≤ 16**

**No Change for MI**

Admissions remains at

**L1R4 ≤ 20**

Component	Subjects	Now L1R5	2028 JAE L1R4
L1	English or Higher Mother Tongue	✓	✓
R1	Any 1 best-scoring subject from Humanities	✓	✓
R2	Any 1 best-scoring subject from Mathematics or Science	✓	✓
R3	Any 1 best-scoring subject from Humanities, Mathematics or Science	✓	✓
R4	Any 1 best-scoring subject	✓	✓
R5	Any 1 best-scoring subject	✓	



**NEW!**

# From 2028 JAE, Admissions to JC/MI

## JC/MI Admission Criteria:

- **Minimum grade requirements** for EL and Mathematics will be retained, but **revised for MTL Languages**
- **Discontinuation of MTL Language 'B'**

<u>Subject specific requirements for JC/MI</u>	
Subject	Grade
English Language	1 – 6 at G3
Mathematics (Elementary/Additional)	1 – 7 at G3
Any one Mother Tongue Language	Higher Mother Tongue Language: 1-8 at G3 Mother Tongue Language: 1-7 at G3; 1-5 at G2; A-D at G1

# From 2028 JAE, Admissions to JC/MI Bonus Point System

**NEW!**

## Type of Bonus Points

## Points

CCA Grade	Excellent: 2
	Good: 1
EL and HMTL Grade ◦ A1 to C6 for both subjects	2
Chinese/Malay (Special Programme) or Bahasa Indonesia Grade ◦ A1 to C6	2
Affiliated JC	2

Now

MAXIMUM OF

**4** from any combination

2028 JAE

MAXIMUM OF

**3** from any combination

NEW!

# Admissions to Polytechnic Year 1

From 2028, one 'Best' [B] subject can be fulfilled at G2 or G3 as part of the aggregate score for admission to Polytechnic Year 1. The net aggregate cut-off will be adjusted from

**26 points** ➡ **22 points.**

**FROM 2028**

2 'Relevant'  
G3 subjects  
**ELR2B2**  
English  
Language  
G3  
1 'Best' G3 subject +  
1 'Best' G2 or G3  
subject

1 G2 subject can be counted as  
1 [B] subject. If you take a G3  
subject, it will be mapped to G2.

G3 Grade	MAPPED TO	G2 Grade
A1, A2, B3		1
B4, C5, C6		2
D7		3
E8		4
9		5
-		6





# Admissions to PFP

- The Polytechnic Foundation Programme (PFP) is a 1-year programme that presently offers eligible N(A) students a practice-based preparatory pathway to a polytechnic education.
- Students offering G3 subjects, or a mix of G2 and G3 subjects will be allowed to access PFP
- MERs will be aligned across the PFP clusters – EL requirement relaxed to Grade 3 (G2) for all clusters;

**ELMAB3 raw aggregate score of  $\leq 12$  points (based on G2)**

Subject specific requirements for PFP	
G2 subjects	New grade requirement
English Language	3
Mathematics	3
Relevant Subject	3
Two "Best" Subjects	4

Grade Mapping Table from G3 to G2	
G	G2
A1, A2, B3	1
B4, C5, C6	2
D7	3
E8	4
9	5
-	6



# Admissions to PFP

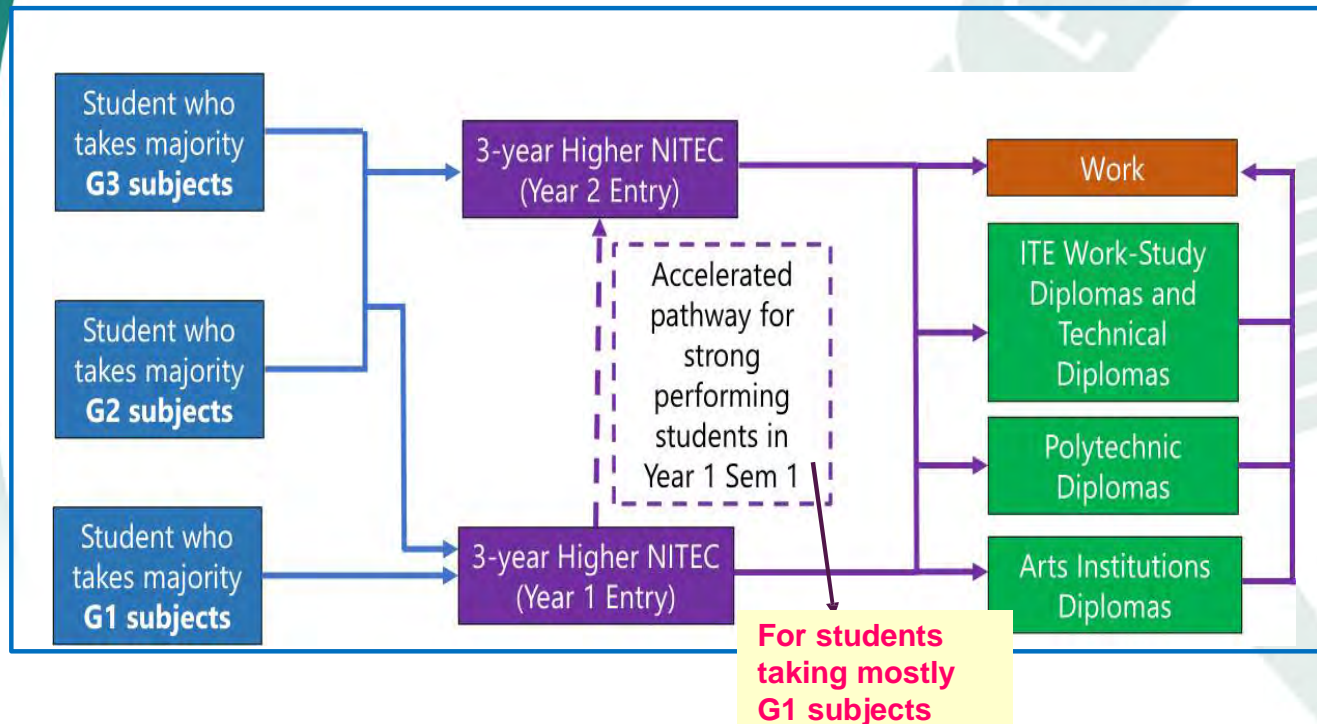
- Admissions will be restructured to a **cluster-based approach** instead of a specific diploma.
- Students will enter one of the following three key broad clusters. At the end of the PFP year, students will then apply to a specific diploma course, and posting will be based on their PFP performance and course choice:
  - Sciences
  - Design, Engineering & Technology
  - Humanities, Art, Media and Business
- For specific diplomas, eg: Nursing & Early Childhood Development and Education related – no change in admissions, still course specific.

# ITE Admissions Criteria

ITE will transit all its Nitec courses to the enhanced **three-year** curricular structure leading directly to a Higher Nitec certification

**Admission to Year 2 of 3-year Higher Nitec consolidated at G2**

*(ELMAB3 aggregate score of 19 points\* or better)*



**From 2028,  
more post-secondary options  
will be available.**

Students taking at least	POST-SEC PATHWAYS					
	ITE Year 1 Entry	ITE Year 2 Entry	Polytechnic Foundation Programme (PPP)	Polytechnic Year 1	Millennia Institute	Junior College
6 G3 subjects	✓	✓	NEW ✓	✓	✓	✓
5 G3 subjects	✓	✓	NEW ✓	✓	✓	NEW ✓
4 G3 + 1 G2 subjects	✓	✓	NEW ✓	NEW ✓		
5 G2 subjects	✓	✓	✓			
4 G1 subjects	✓	NEW* ✓				

\*For students who meet ITE's Year 1 academic requirements



Find out more about Full SBB



## Find out more about Full SBB

### Microsite



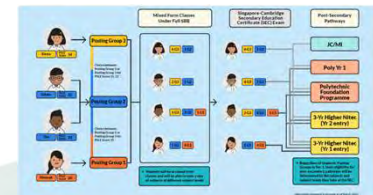
<https://go.gov.sg/moe-fsbb>

### Interactive Site (updated Mar 2024)



<https://go.gov.sg/my-fsbb-path>

### Infographic (updated Mar 2024)



<https://go.gov.sg/fsbb-pathways>



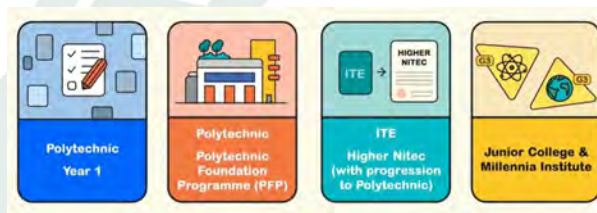
## Find out more about Full SBB

### MOE Explainer Video: Full SBB



<https://go.gov.sg/moe-fsbb-explainer>

### MOE Explainer Video: Post-Secondary Pathways under Full SBB



<https://go.gov.sg/moe-fsbb-postsec>



*Evergreen in Learning,  
Exceptional in Character*

# Education and Career Guidance



# Questions Your Child May Have

## Subject Combination

Which Subject Combination should I take?



## I Don't Know

I don't know what I want to be yet, but I love Literature. What should I do?



## Education Pathways

Which Education Pathway should I choose?



## Career Aspiration

Do I know my career aspiration yet?



# The 3 ECG Questions to Guide Your Child

## WHERE?

Where do I want to go?

There are many pathways with opportunities for continuous learning and recognition.

Where Do I Want To Go?  
**Exploring Opportunities**

## WHO?

Who am I?

The more I know about myself, the better my decisions.

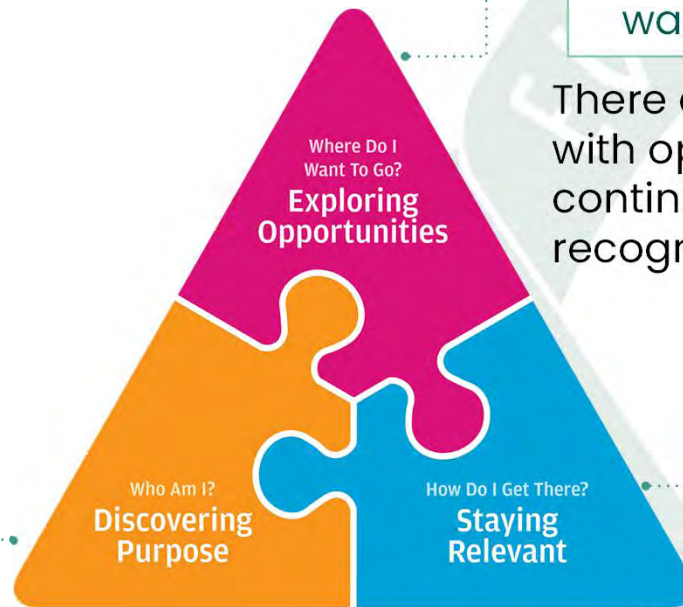
Who Am I?  
**Discovering Purpose**

## HOW?

How do I get there?

Be resilient, explore various pathways and be open to possibilities.

How Do I Get There?  
**Staying Relevant**





# "Who am I?"



01

Unique  
Individual




02

Values, Interests,  
Personality and  
Strengths (VIPS)

03

Self  
Awareness

# "Who am I?"

		
Support them as they discover their VIPS	Encourage Reflection on Experiences	Connect Experiences
<p>What is important to you? What motivates you?</p> <p>What are the issues you feel strongly about?</p> <p>What do you enjoy doing?</p> <p>How would you describe yourself? How do others describe you?</p> <p>What are your strengths? What have people praised you for?</p>	<p>What do you do in...?</p> <p>What do you like / dislike about...?</p> <p>How do you feel when...?</p> <p>What did you learn about...?</p> <p>What did you discover about yourself through...?</p>	<p>What have you learned in &lt;Subject&gt; that will be useful for &lt;Jobs you like&gt;?</p> <p>Is this an ability / skill / interest you want to develop further?</p> <p>Would you like to do something like that in your future job? Why?</p>

# “What are your child’s interests?”



The screenshot shows the MySkillsFuture website. At the top is a navigation bar with links: About, Know Yourself, World of Work, Education Guide, Help, and Feedback. Below the navigation bar is a large hero section featuring a video player with the title "About MySkillsFuture" and a play button icon. The video description reads: "A one-stop portal that empowers you to embark on a journey of self-discovery and make informed education and career choices. Use the information and tools to explore various education and career pathways, and take charge of your future." Below the video player is a section titled "Find out more about yourself" with a subtext: "Everyone has a set of unique attributes. The more you know about what you value, what you are interested in, and what you are good at, the more likely you will be able to make good choices in your education and career explorations." At the bottom of this section is a "Discover Now" button. On the right side of the website, there is a sidebar with a "What's new" section and a list of news items.

**MySkillsFuture**

About Know Yourself World of Work Education Guide Help Feedback

## About MySkillsFuture

A one-stop portal that empowers you to embark on a journey of self-discovery and make informed education and career choices. Use the information and tools to explore various education and career pathways, and take charge of your future.

### Find out more about yourself

Everyone has a set of unique attributes. The more you know about what you value, what you are interested in, and what you are good at, the more likely you will be able to make good choices in your education and career explorations.

**Discover Now**

What's new Event Highlights

- How Singaporean not having a deg
- All SMU undergrad one course in the
- Nanyang Polytec
- Public transport added as rail net
- Skills developme and India: Gan Ki
- SUSS, SIA launch
- Full Subject-base Dayi Secondary S
- Sniffing out a go
- Eating your way thinking and lear

Explore the MySkillsFuture Student Portal (<https://go.gov.sg/MySFSec>) together with him/her

# Parent Resources for Strengths Explorer

## Competing

You see many things in life as a game, and you feel great joy when you win. You truly hate to lose because you are always striving for first place.

## Confidence

You believe in yourself and what you can do. This helps you take on challenges because you feel sure you can succeed.

## Future Thinker

Your mind loves to think and dream about the future. You are a person who thinks about what is possible, not what is impossible.





# "Where Do I Want to Go?"



## Start exploring areas of Interests

Which would be your top 3 aspirations? Why did you choose these?

Are there others you have in mind?

What are the skills / knowledge you wish to develop / gain?

Would you prefer something more academic or hands-on and work-oriented?

## Prompt them to think Beyond

What do you want from this career?

What are the things important to you in a job?

What would be some other jobs related to this role / industry?

How can you find more information?

## Let your Child be the Expert

That's a job I don't know much about, could you tell me more what it does?

How's the job prospect like? Could we find out and discuss more next time?

What does this course offer? What will you be learning / experiencing?

# "Where Do I Want to Go?"



Designer?  
Physiotherapist?  
Programmer?  
Urban Farmer?

Which Occupation  
should I choose?



Engineering?  
Business?  
Humanities?  
Science / Arts?

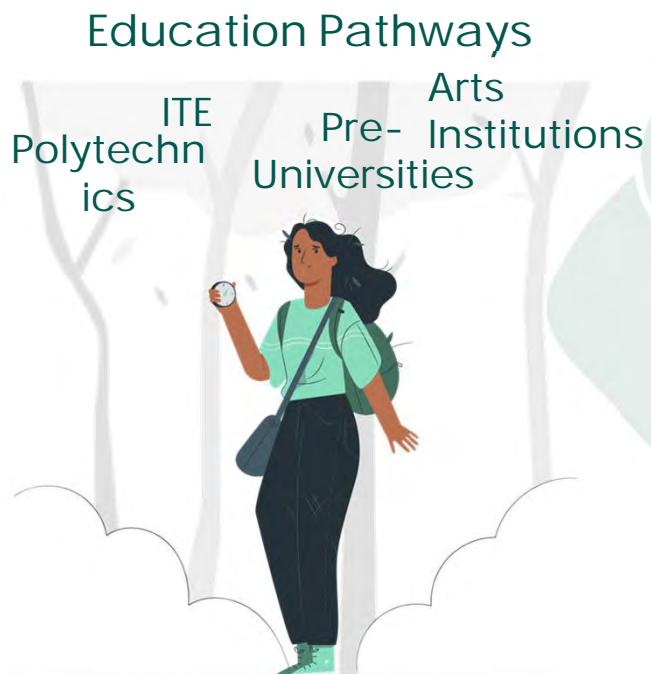
Which Course / Stream  
should I choose?



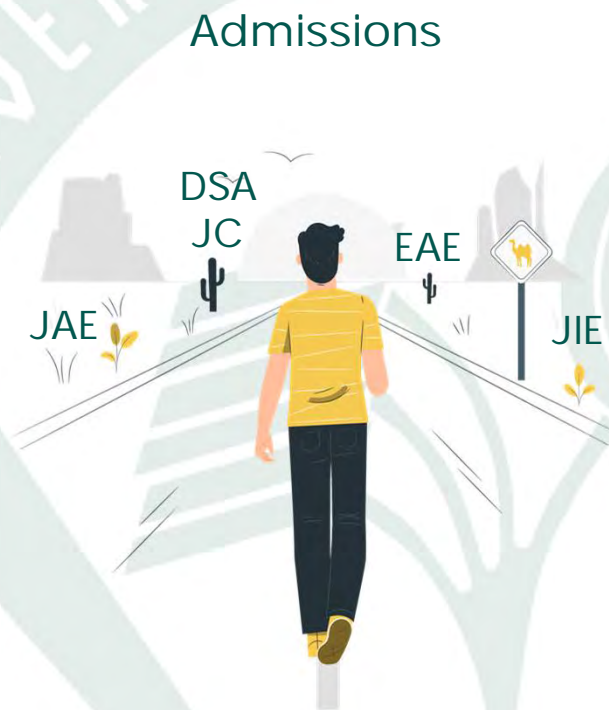
Creating new AI?  
Improve Mental Health?  
Improve Sustainability?  
Distribute Wealth?

Sense of Purpose / Challenge

# “Where Do I Want to Go?”



Credit : Illustration by Storyset



# Post-Secondary Educational Options

## Junior Colleges/ Centralised Institute

**18 JCs\***

**1 CI**

\* Of which, 7 also accept flow through students from the IP

## Polytechnics

**5 Polys**

## Institute of Technical Education

**3 Colleges**



# “ How do I Get There?”



## Get your child to be responsible for their own plan

Which courses / qualifications do you think will lead you to this job?

**Are there any prerequisites / minimum entry requirements to apply to these courses?**

What steps can you take to work towards your goal?

How can you better prepare yourself for this course / job?

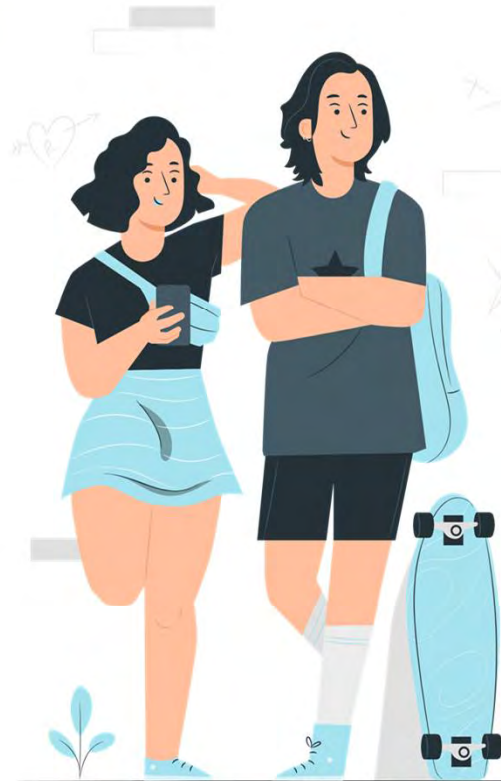
**What are the possible ways/admissions to get to your course?**

What 'game plan'/plan do you have in mind to work towards this course/career?

Are there ways you can experience what the job is like?

Are there practical constraints you may face?

# Supporting Our Children's Aspirations



## **Support**

Have regular and genuine conversations with your child, where you are open to hearing them

## **Empathise**

Encourage your child to share with you why he/she makes certain decisions/ choices.

## **Familiarise**

Familiarise yourself with your child's personality and learning style

## **Affirm**

Show love and support which helps your child grow in confidence



*Evergreen in Learning,  
Exceptional in Character*

# Sources of ECG Support



# Speak to MOE ECG Counsellor

Make an appointment to speak with ECG Counsellor in school or via <https://go.gov.sg/evergreenbooking2024>

**Ms Li Minyi**  
*ECG Counsellor*

**Tuesdays & Thursdays**  
@ Evergreen Secondary School  
Venue: Library – ECG Room  
Email: [li\\_Min yi@moe.edu.sg](mailto:li_Min yi@moe.edu.sg)







*Evergreen in Learning,  
Exceptional in Character*

# School-Home Partnership



# Home-School Partnership

Our children do best when schools and parents work hand in hand to support them.

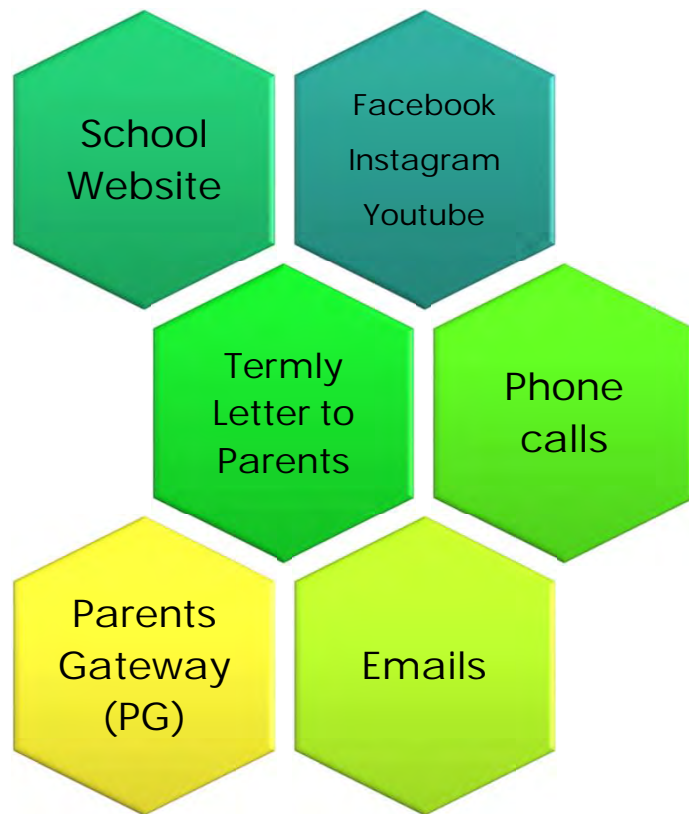
**Respectful Communication**

**Role Models**

**Real Connections**



# Home-School Partnership



- We value our partnership with you in helping your child grow and thrive.
- Teachers will reply to messages between 8am – 6pm on weekdays during school terms, so they can focus on teaching and supporting students.
- For urgent matters, please contact the General Office directly.

# Parent-Teacher Meetings (PTM)

**Mid-Year**



**End-of-Year**





## Resources

### Video – Heart to Heart Talk



<https://go.gov.sg/h2htep2>

### ECG Tips for Parents



<https://go.gov.sg/tips-for-parents>



*Evergreen in Learning,  
Exceptional in Character*

# Q & A



# Q & A



Kindly scan the QR code to post your questions.

You may also email:

- Mr Oun Yejiu (Year Head)  
Email: [oun\\_yejiu@schools.gov.sg](mailto:oun_yejiu@schools.gov.sg)
- Ms Joanna Lee Teck Miang (Assistant Year Head)  
Email: [lee\\_teck\\_miang@schools.gov.sg](mailto:lee_teck_miang@schools.gov.sg)
- Ms Lydia Sng (Assistant Year Head)  
Email: [lydia\\_sng\\_pei\\_en@schools.gov.sg](mailto:lydia_sng_pei_en@schools.gov.sg)



Thank You  
and have a nice day!

